



**RICHARD KING MELLON FOUNDATION
1994 ANNUAL REPORT**



RICHARD KING MELLON

1899–1970

Richard King Mellon was born in Pittsburgh, Pennsylvania on June 19, 1899, the son of Richard Beatty Mellon and Jennie King Mellon. Mr. Mellon served his country in both World Wars and in peacetime, attaining the rank of Lieutenant General, United States Army Reserve, and receiving the Distinguished Service Medal. Mr. Mellon was the dominant figure in the financial, industrial, and civic life of his community for many years. He was President of Mellon National Bank and for twenty years Chairman of the Board of Mellon National Bank and Trust Company; as a director, he aided the growth of many of the nation's leading enterprises, particularly Gulf Oil Corporation and Aluminum Company of America.

Mr. Mellon, Founder, President and Governor of T. Mellon and Sons, inspired and led the rebirth of a great American city. His creative energies forged the Pittsburgh Renaissance, an architectural, civic, social and educational masterpiece.

In 1936, Mr. Mellon married the former Constance Mary Prosser, who served as Chairman of the Board of Trustees of the Richard King Mellon Foundation from its inception in 1947 until her death in 1980.

A renowned sportsman, Mr. Mellon generously endeavored to preserve the quality of the natural environment and to protect its wildlife.

Mr. Mellon died on June 3, 1970.



We have not moved...



*...but are discontinuing
the use of P.O. Box 2930.*

*In the future, please send
all mail to our street address which is:*

*Richard King Mellon Foundation
One Mellon Bank Center
500 Grant Street - Suite 4106
Pittsburgh, PA 15219-2502*

RICHARD KING MELLON FOUNDATION

1994 ANNUAL REPORT

ONE MELLON BANK CENTER
500 GRANT STREET
PITTSBURGH, PA 15219-2502
(412) 392-2800

Table of Contents

President's Letter	3
Statistical Summary	7
Conservation	8
Human Services	14
Education	22
Medicine	26
Civic Affairs	28
Cultural Activities	32
Balance Sheets	35
Statements of Income, Expenses and Changes in Fund Balances	36
Summary of Investments	37
Independent Auditor's Report	38
Grant Guidelines and Application	39

Cover:

*Boys from the Outside-In School of Experiential Education experience
the Ligonier Valley Conference Center's high ropes course.*



Seward Prosser Mellon
President

Richard P. Mellon
Chairman

PRESIDENT'S LETTER

The Foundation's American Land Conservation Program continues to be a major emphasis of our grantmaking. As federal and state funding for land acquisitions shrinks, we anticipate that the Foundation's role will become even more crucial if we are to protect wetlands, wildlife habitat, and historical lands for future generations to enjoy. In other conservation areas, the Foundation made sizeable commitments of \$300,000 to the Tides Foundation to support a project on environmental program evaluation and budget analysis and \$250,000 to the National Wild Turkey Federation for general support.

The trustees continue to pursue grants which improve the quality of education for the area's primary and secondary students. A \$1 million challenge seed grant was provided to the Fund for the Advancement of Minorities Through Education enabling area independent schools to give scholarships to minority students who demonstrate financial need. Valley School of Ligonier, an independent elementary school, received a \$2 million grant for capital improvements. In higher education, Westmoreland County Community College was the recipient of a \$500,000 unrestricted grant to renovate its facilities.

In keeping with our Human Services priority of rewarding organizations that do substantive work with families and young children, Family Resources was given a three year grant totaling \$450,000 for program support. In addition, Hosanna House, Inc. of Wilkinsburg received \$600,000 to develop a community center in a former

public school building, Goodwill Industries was awarded \$600,000 for construction of a new complex on Pittsburgh's South Side, and Women's Center and Shelter received a like amount for its capital campaign to purchase and renovate its new facility.

Civic Affairs covers a broad array of activities. For example, the largest gift of \$1 million went to the United Jewish Federation of Pittsburgh in support of its capital campaign to meet the growing needs of its elderly and school age populations. \$450,000 went into economic development for the Mon Valley area with a grant to the Mon Valley Initiative and a \$300,000 grant was received by the Urban Redevelopment Authority for support of the residential development of Crawford Square near Pittsburgh's business center.

Until the 1990s the issue of women's health research had been virtually ignored in this country. An audit by the General Accounting Office in 1989 revealed that only 13.5% of the \$5.7 billion allotted to the National Institute of Health went to women's health research. Magee-Womens Hospital is uniquely positioned to reverse the discrepancy unveiled in the GAO audit with the establishment of the Magee-Womens Research Institute. This past year we awarded a \$500,000 leadership grant to help stabilize the Institute, thus strengthening Pittsburgh's reputation as a major international center for medical care and research.



*Front row, left to right: Seward Prosser Mellon, George H. Taber, Mason Walsh, Jr.,
Andrew W. Mathieson. Back row: Arthur M. Scully, Jr., Richard P. Mellon*



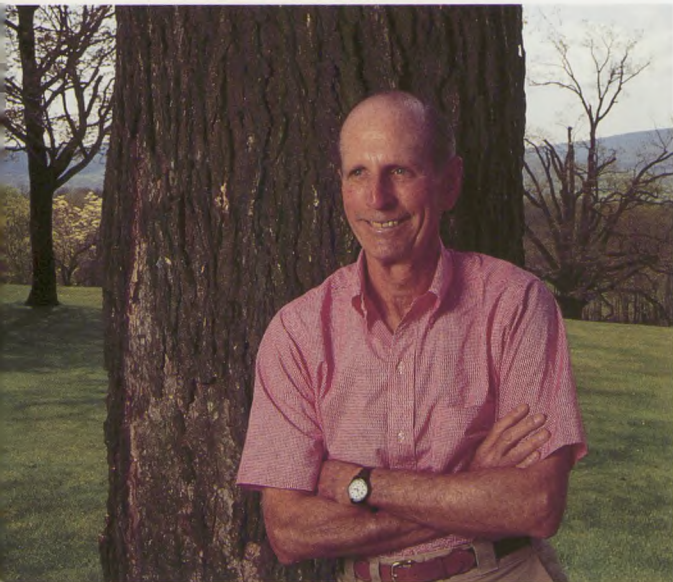


President's Letter

CONTINUED

Another \$500,000 grant went to the Lahey Clinic in Massachusetts to support its Urology Department, while the Health Education Center was the recipient of \$300,000 for a wellness program being established in Pittsburgh's public housing communities.

We continued our long-standing operational support of Pittsburgh's Symphony, Ballet, Opera and Public Theater and gave \$150,000 each to the Mattress Factory and Saltworks Theater for two years of operating support.



George H. Taber

After thirty-one years with the Richard King Mellon Foundation, almost twenty as its director, George H. Taber retired on June 30, 1994. In his years with the Foundation he has provided sound judgment and steady leadership. Many of the programs and institutions he helped launch since 1975 still flourish. His influence will be missed, but I am delighted that George is staying on in his capacity as trustee. On behalf of all of us at the Foundation, I wish George and his wife Janet a happy and well deserved retirement.

Seward Prosser Mellon
President

1994 APPROPRIATIONS

By Category

Conservation	\$21,609,074
Human Services	7,769,000
Education	5,674,000
Medicine	1,012,000
Civic Affairs	2,767,090
Cultural Activities	2,458,792
	<hr/>
	\$41,289,956

By Area

Pittsburgh & Western Pennsylvania	\$18,638,482
Other	22,651,474
	<hr/>
	\$41,289,956

1947-1994 NET INVESTMENT INCOME

1947-1993	\$428,755,409
1994	26,393,165
	<hr/>
	\$455,148,574

1947-1994 GRANTS PAID AND PROGRAM-RELATED INVESTMENTS

1947-1993	\$535,831,969
1994	40,138,706
	<hr/>
	\$575,970,675

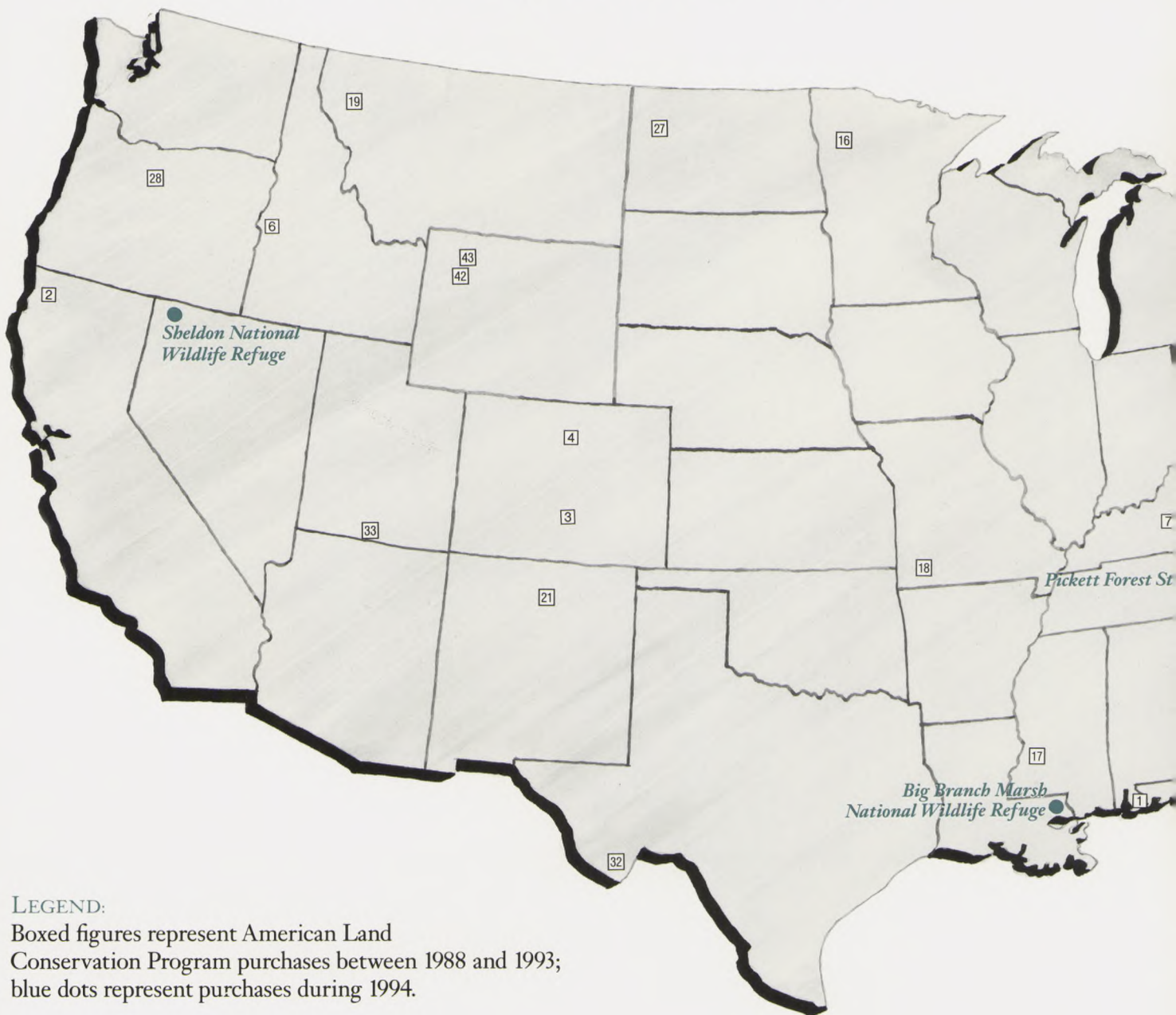
The following sections provide brief reports on the Richard King Mellon Foundation's grant activities in 1994, as well as descriptions of the organizations the Foundation has assisted.



CONSERVATION

AMERICAN LAND CONSERVATION PROGRAM

As the nation's population grows, unplanned development of open spaces threatens to deprive future generations of the natural beauty and grandeur we have come to take for granted. The American Land Conservation Program was initiated in 1988 to acquire and preserve key tracts of land which were in danger of being lost to urban sprawl and environmentally insensitive development. The tracts described below are examples of some of the more significant projects acquired during 1994.



LEGEND:
Boxed figures represent American Land Conservation Program purchases between 1988 and 1993;
blue dots represent purchases during 1994.

Big Branch Marsh National Wildlife Refuge, Louisiana

St. Tammany Parish, Louisiana

Establishing a new National Wildlife Refuge to protect one of the last remaining natural areas in the rapidly developing New Orleans metropolitan region, the foundation gave the U.S. Fish and Wildlife Service 3,700 acres

of estuaries, ponds, and bayous on the north shore of Lake Pontchartrain. The new refuge, which was supported strongly by U.S. Senator J. Bennett Johnston, Congressman Robert Livingston and members of the local community, attracts a wide variety of shorebirds, wading birds, migratory species and wintering waterfowl. It also provides critical spawning and nursery habitat for commercially important fish, shrimp, and crabs.

Copperas Ridge

Morris County, New Jersey

In a major step that will help protect the beauty and wildlife of the scenic Highlands and safeguard drinking water supplies for the region's residents, the foundation came to the aid of the state of New Jersey. Through the foundation's assistance New Jersey acquired 2,500 acres of mountains,



1988-1993 Project Locations

- 1 Bon Secour National Wildlife Refuge, *Alabama*
- 2 Redwood National Park, *California*
- 3 Rocky Mountain National Park, *Colorado*
- 4 Deer Haven Ranch, *Colorado*
- 5 Archie Carr National Wildlife Refuge, *Florida*
- 6 Hiliman Ranch, *Idaho*
- 7 Mammoth Cave National Park, *Kentucky*
- 8 Bold Coast, *Maine*
- 9 Rachel Carson National Wildlife Refuge, *Maine*
- 10 Blackwater National Wildlife Refuge, *Maryland*
- 11 Deal Island Wildlife Management Area, *Maryland*
- 12 Fishing Bay Wildlife Management Area, *Maryland*
- 13 Chesapeake Bay Environmental Education Center at Bishop's Head, *Maryland*
- 14 Antietam National Battlefield, *Maryland*
- 15 High Rocks Gorge State Park, *Massachusetts*
- 16 Rydell National Wildlife Refuge, *Minnesota*
- 17 Champion Hill, *Mississippi*
- 18 Johnson's Shut-Ins State Park, *Missouri*
- 19 Thompson Chain of Lakes, *Montana*
- 20 Bowman Island, *New Hampshire*
- 21 Pecos National Historical Park, *New Mexico*
- 22 Adirondack Forest Preserve, *New York*
- 23 Salmon River, *New York*
- 24 Pocosin Lakes National Wildlife Refuge, *North Carolina*
- 25 Mackay Island National Wildlife Refuge, *North Carolina*
- 26 Pettigrew State Park, *North Carolina*
- 27 Schnell Ranch, *North Dakota*
- 28 Ferry Canyon, Deschutes River, *Oregon* (National Wild and Scenic River)
- 29 David M. Roderick Wildlife Reserve, *Pennsylvania*
- 30 Gettysburg National Military Park, *Pennsylvania*
- 31 Block Island, *Rhode Island*
- 32 Christmas Mountains Ranch, *Texas*
- 33 Glen Canyon National Recreation Area, *Utah*
- 34 Appomattox Court House National Historical Park, *Virginia*
- 35 Fredericksburg and Spotsylvania National Military Park, *Virginia*
- 36 Fredericksburg and Spotsylvania National Military Park, Chancellorsville Battlefield Unit, *Virginia*
- 37 Petersburg National Battlefield, Five Forks Unit, *Virginia*
- 38 Manassas National Battlefield Park, *Virginia*
- 39 Rapidan Wildlife Management Area, *Virginia*
- 40 Shenandoah National Park, *Virginia*
- 41 North Branch Potomac River, *West Virginia*
- 42 Shoshone National Forest, *Wyoming*
- 43 Sunshine Ranch, *Wyoming*

American Land Conservation Program

CONTINUED

lakes, and streams. In addition to its importance as wildlife habitat and for watershed protection, the land will provide new opportunities for outdoor recreation. New Jersey Governor Christie Whitman said, “The Highlands is one of New Jersey’s most significant natural resources and we’re taking steps to ensure that New Jersey residents will be able to continue to enjoy the natural beauty of the region —its lakes, forest and mountain views.”

Kings Mountain

York County, South Carolina

At Kings Mountain in 1780, in what historians have come to call one of the turning points in the Revolutionary War, frontiersmen attacked a battalion of American Loyalists commanded by a British army major. The Tories, armed with muskets and bayonets, were no match for the mountain-savvy revolutionaries, whose accurate rifle fire from behind protective cover overwhelmed their adversaries. The foundation’s purchase and gift of 269 acres of historic land to the Nation Ford Land Trust complements nearby Kings Mountain National Military Park and Kings Mountain State Park.

Pickett State Forest

Pickett County, Tennessee

As a gift to the people of Tennessee, the foundation added 5,000 acres to the state’s popular Pickett State Forest. The rugged, wooded addition will be managed in cooperation with the Tennessee Wildlife Resources Agency for timber production, watershed protection, wildlife, outdoor recreation and research. The acquisition came after complex negotiations by The Conservation Fund on behalf of the foundation with the land’s former corporate owners. Pickett State Forest, in north central Tennessee, is bordered on the east by the Big South Fork National River and Recreation Area.

Sheldon National Wildlife Refuge

Humboldt County, Nevada

The foundation purchased and retired, with an innovative and precedent-breaking gift, grazing permits covering almost 600 square miles at Sheldon National Wildlife Refuge. As a result of the gift, which included valuable water rights and additional property, the refuge can begin an ecological management program that will benefit its 178 species of birds and 57 species of mammals which include pronghorn antelope and California bighorn sheep. Habitat restoration is already underway in a number of critical wetland areas. Plans call for reintroduction of long-absent native species of wildlife. Ranchers, from whom the foundation purchased the grazing permits, favorably endorsed the project, long a top priority for the U.S. Fish and Wildlife Service. As Sheldon and its wildlife prosper in the years ahead, the refuge will become not only one of the Great Basin’s premier wildlife areas, but also a favorite destination for outdoor enthusiasts.

TRUSTEES

Richard P. Mellon
Seward Prosser Mellon
Andrew W. Mathieson
Arthur M. Scully, Jr.
George H. Taber
Mason Walsh, Jr.

OFFICERS

Richard P. Mellon
Chairman

Seward Prosser Mellon
*President and
Chairman of the Executive
Committee*

Andrew W. Mathieson
Vice Chairman

Michael Watson
Vice President and Secretary

Arthur D. Miltenberger
Treasurer

Robert B. Burr, Jr.
Assistant Treasurer

Ann Marie Helms
Assistant Secretary

John J. Turcik
Controller

CREDITS:

Editing: Mary Brignano
Graphic Design: Robert Bowden
Typography: Hamilton Phototype
Photography: Jim Judkis

OTHER CONSERVATION

American Wildlands *Englewood, Colorado*

The mission of American Wildlands is to promote the responsible management and protection of forests, wildlife, wilderness, wetlands, watersheds, rivers, and fisheries.

\$47,500 to purchase computer hardware needed for the Corridors of Life Project designed to help solve the problems of biodiversity protection in the Northern Rocky Mountains.

The Archaeological Conservancy *Groveport, Ohio*

The Archaeological Conservancy is a national organization dedicated to acquiring and permanently preserving the best of the nation's remaining archaeological sites.

\$50,000 toward general support.

Loyalhanna Watershed Association, Inc. *Ligonier, Pennsylvania*

Loyalhanna Watershed Association's mission is to conserve the resources and natural beauty of the Ligonier Valley area. As a part of this effort it is spearheading a drive to implement a 41-mile network of mountain bike trails and support facilities on Laurel Mountain.

\$85,000 support toward development of bike trails on Laurel Mountain.

Maine Coast Heritage Trust *Brunswick, Maine*

Maine Coast Heritage Trust helps landowners and communities protect the Maine Coast for the future, thus preserving its natural beauty. This mission includes the purchase and management of property.

\$100,000 (conditional) toward operating support for the Island Protection Program.

National Wild Turkey Federation, Inc. *Edgerfield, South Carolina*

The federation's mission is "the conservation of the wild turkey and the preservation of the turkey hunting tradition." The organization strives to promote awareness of, and support for, wild turkey conservation programs on public, private, and corporate lands nationwide, thereby enhancing the environment and the quality of life of Americans.

\$250,000 toward the Executive Vice President's discretionary fund.

The Pennsylvania State University *University Park, Pennsylvania*

The success of regulatory codes and, therefore, the quality of future development within a community rests upon its ability to understand the implications of these codes. Penn State University's Department of Landscape Architecture has developed prototype computer software capable of visually rendering the effects of zoning changes, thereby enabling communities to undertake the most efficient and effective planning strategies.

\$120,000 to create interactive visual-based regulations to aid community design.

Preservation Pennsylvania *Lancaster, Pennsylvania*

Preservation Pennsylvania is dedicated to the protection of historically and architecturally significant properties. Through creative partnership, targeted educational and advocacy programs, advisory assistance, and special projects, the organization assists communities to protect and utilize historic resources they want to preserve for the future.

\$20,000 to produce a book tentatively entitled *Save Our Land, Save Our Towns: A Plan for Pennsylvania*.

Society for the Protection of New Hampshire Forests *Concord, New Hampshire*

Founded in 1901, the society has recently reaffirmed its mission, which is "the perpetuation of the forests by wise use and their complete preservation in places of special scenic beauty."

\$50,000 toward program support.

Other Conservation

CONTINUED

Sonoran Institute *Tucson, Arizona*

The institute is leading the way in the search for new solutions to the land-use conflicts facing a rapidly growing nation. Its programs are designed to preserve the ecological integrity of protected natural areas, not through confrontation and polarization, but through carefully tailored, cooperative approaches that protect

natural landscapes while meeting the needs and aspirations of landowners and communities.

\$50,000 payable over two years for operating support.

Student Conservation Association, Inc.

Charlestown, New Hampshire

The Student Conservation Association fosters lifelong stewardship of the environment by offering opportunities for education, leadership, and personal development while providing the highest quality public service in natural resource management, environmental protection, and conservation.

\$100,000 payable over two years for operating support.



One of the many critical parcels of land protected by the Foundation's American Land Conservation Program.

Tides Foundation

San Francisco, California

The Environmental Working Group, a project of the Tides Foundation, is a nonprofit environmental research organization dedicated to improving environmental protection through the analysis of federal and state regulatory policies and performance and through technical assistance and education.

\$300,000 payable over three years to support a project on environmental program evaluation and budget analysis.

Trout Unlimited

Arlington, Virginia

Trout Unlimited's mission is to conserve, protect, and restore North America's coldwater fisheries and their watersheds.

\$120,000 payable over two years for program support to match a two-for-one challenge grant from National Fish and Wildlife Foundation.

University of Minnesota

St. Paul, Minnesota

The university is establishing an endowed chair in forest wildlife research and education. The chair is named as a memorial to Gordon Gullion whose three decades of research at the Cloquet Forestry Center were instrumental in developing practices used by public and private agencies to manage forests for the combined benefit of wildlife and timber production.

\$100,000 (conditional) toward endowment of the Gordon Gullion Endowed Chair in Forest Wildlife Research and Education.

The Urban Institute

Washington, District of Columbia

The Urban Institute, a national leader in the development of performance monitoring systems, is assisting in the development of a standardized estuary monitoring system. This will allow participants to track improvements, identify effective solutions, and provide accountability to citizens and elected officials on the progress of estuary protection.

\$10,000 toward program support to assist in the protection of America's coastal waters.

The Wildlife Conservation Fund of America

Columbus, Ohio

The Wildlife Conservation Fund protects and defends America's wildlife conservation programs and the pursuits of hunting and fishing which generate the money to pay for the programs.

\$250,000 toward support for the sportsmen's education program.

Wildlife Habitat Enhancement Council

Silver Spring, Maryland

The Wildlife Habitat Enhancement Council is a group of individuals, conservation organizations, and corporations dedicated to the enhancement and preservation of wildlife habitat. The council was created in 1988 to help landholders, particularly corporations, manage their unused lands in an ecologically sensitive manner for the benefit of wildlife.

\$10,000 toward program support.



American Land Conservation Program	\$19,946,574
Other conservation grants	1,662,500
<hr/>	
Total Conservation	\$21,609,074

HUMAN SERVICES



*McKeesport families participate in From Birth to Five,
a program of Family Resources.*

**Allegheny Policy Council
for Youth and Workforce
Development**
Pittsburgh, Pennsylvania

The Policy Council was established to improve the education of youth in the Greater Pittsburgh area. The council has made school-to-work transition one of its priorities and, through a strategic collaboration with Allegheny County and the City of Pittsburgh, coordinates a summer youth employment program that emphasizes linkages to full-time jobs.

\$200,000 toward operating support for a summer youth employment program.

**American Red Cross
Southwestern Pennsylvania
Chapter**
Pittsburgh, Pennsylvania

The mission of the American Red Cross is to help people prevent, prepare for, and respond to emergencies, and to provide assistance in times of disaster.

\$50,000 toward support for southwestern Pennsylvania disaster relief efforts.

Bethlehem Haven
Pittsburgh, Pennsylvania

Bethlehem Haven is the only emergency shelter for single, homeless women located in downtown Pittsburgh and the only shelter which does not prescreen its guests. The Haven provides refuge to more than 420 women annually, many of whom participate in outreach counseling and referral, primary medical care, and educational workshops at the shelter.

\$10,000 toward operating support for a downtown shelter for homeless women.

**Boys and Girls Club
of Western Pennsylvania**
Pittsburgh, Pennsylvania

The Boys and Girls Club is dedicated to enhancing the quality of life for young people aged six to eighteen who live in low-income, ethnically diverse neighborhoods in Greater Pittsburgh. Its primary mission is to promote health, social, educational, vocational, and character development for boys and girls by building self-esteem, values, and skills during critical periods of growth.

\$50,000 to be administered to Kids-Watch, a program to give children an intense education in personal safety, crime prevention, civic awareness and responsibility, and to promote self-respect and respect for others.

\$150,000 in unsolicited operating support toward the Boys and Girls Club in recognition of its exemplary work.

The Bradley Center
Pittsburgh, Pennsylvania

Founded as an orphanage in 1905 by a United Methodist Church organization, Bradley Center today functions as a licensed child care, multipurpose organization providing both placement and outreach services to emotionally disturbed, abused children and their families.

\$200,000 toward a capital campaign for a multipurpose recreation building.

CareBreak
Pittsburgh, Pennsylvania

CareBreak's mission is to provide families of physically disabled but mentally alert children with high quality and reliable volunteer respite care. Unlike such paid professionals as doctors, social workers, and therapists, whose interaction with these families is intermittent, CareBreak's responsible and trained volunteers provide free weekly care, and often remain with the same families for years.

\$100,000 payable over two years toward operating support.

**Clelian Heights School
for Exceptional Children**
Greensburg, Pennsylvania

Clelian Heights was established in 1961 as a residential and day school for mentally and developmentally disabled children. Today the school provides a range of academic and vocational training and resocialization programs for ages five to twenty-one, and serves more than 100 children and adults annually.

\$200,000 toward a capital campaign for a Recreation/Therapeutic Center.

Community Design Center of Pittsburgh, Inc.

Pittsburgh, Pennsylvania

Community Design Center of Pittsburgh seeks to improve the quality of design of Pittsburgh's neighborhoods through a variety of educational initiatives and through direct design fund grants to community organizations. These small, recoverable grants help community organizations benefit from professional architectural and planning expertise at the earliest stages in project development.

\$75,000 (conditional) toward administrative costs and loan fund.

Community Human Services Corporation

Pittsburgh, Pennsylvania

Community Human Services Corporation "seeks to build community by working with people to identify their strengths and needs and collaborating with them to find ways to use those strengths to accomplish their goals."

\$150,000 payable over three years toward planning support for community revitalization programs.

\$500,000 (conditional) to assist with the restructuring of Wood Street Commons, which provides safe and affordable housing to homeless and low income men and women.

\$100,000 payable over two years toward operating support for Operation Save A Life, a street outreach program founded by men and women who were once homeless.

Controlled Environment Horticulture, Inc.

Pittsburgh, Pennsylvania

Controlled Environment Horticulture (CEH) was incorporated in 1993 to develop projects designed to employ persons with disabilities in an integrated horticultural workplace and to utilize controlled environment and environmentally benign growing methods. CEH is developing the Brookside Project, located at an existing greenhouse and farm market in Franklin Park Borough, to create a wide range of job opportunities for both the disabled and the nondisabled.

\$250,000 capital grant toward purchase and renovation of a greenhouse and farm market to provide employment opportunities to people with disabilities.

Council on Foundations, Inc.

Washington, District of Columbia

Founded in 1949, the council works to promote, encourage, and enhance the contributions and responsiveness of organized grantmaking to society and the public good.

\$5,000 toward operating support for Grantmakers for Children, Youth and Families.

Domestic Abuse Counseling Center, Inc.

Pittsburgh, Pennsylvania

Incorporated in 1991, Domestic Abuse Counseling Center's mission is to end domestic violence perpetrated by males in western Pennsylvania. This mission is accomplished through the development of programs for counseling abusers; collaborative efforts with social service agencies, criminal justice systems, victim-advocate agencies, and health organizations; and by means of public awareness and education.

\$180,000 payable over three years toward operating support.

East End Cooperative Ministry, Inc.

Pittsburgh, Pennsylvania

This interfaith coalition of 45 churches, synagogues, and religious institutions was incorporated to help meet human needs in the East End neighborhoods of Pittsburgh. Assistance includes food and shelter for the homeless and needy, support services for the elderly, a halfway house for young mothers recovering from substance abuse, and programs for children and youth.

\$10,000 toward operating support for a summer youth camp.

East Liberty Presbyterian Church

Pittsburgh, Pennsylvania

Built in the 1930s, the church is upgrading its outdated kitchen facilities to establish a job skills training center for the unemployed residents of the East End communities of Pittsburgh, provide food service for internal church functions and programs, and provide low-cost, nutritious lunches for the adjacent residential and commercial neighborhood.

\$125,000 toward kitchen renovations.

Eastminster House, Inc.
Pittsburgh, Pennsylvania

The William and Mildred Orr Compassionate Care Center is a residential facility providing temporary care for the elderly, frail, and homeless. It helps those without support through critical posthospital healing and, whenever possible, toward self-sufficiency.

\$50,000 toward operating support.

Executive Service Corps of Western Pennsylvania
Pittsburgh, Pennsylvania

Executive Service Corps of Western Pennsylvania assists nonprofit institutions in Pittsburgh and western Pennsylvania become more successful through the expertise provided by volunteer management consultants.

\$20,000 toward two years of operating support to expand services.

Family Resources
Pittsburgh, Pennsylvania

Formed in 1986, Family Resources provides prevention-oriented, community-based services to families of young children in Pittsburgh's East End, South Side, and center city. Its goals are to lessen the impact of risk factors associated with child abuse and neglect, promote the physical and emotional well-being of children and families, and enhance the community's ability to support families. Family Resources also provides crisis intervention and treatment services to families where sexual and physical abuse has occurred, and training to other professionals working in the field.

\$450,000 payable over three years toward program support.

Gateway Rehabilitation Center
Aliquippa, Pennsylvania

Founded in 1972, Gateway Rehabilitation Center is a freestanding, nonprofit treatment facility offering comprehensive inpatient and outpatient services to individuals with drug and alcohol problems, and their families.

\$100,000 (conditional) toward a four-year study of the effectiveness of outpatient chemical dependency treatment.

Goodwill Industries of Pittsburgh
Pittsburgh, Pennsylvania

Goodwill Industries is a human service agency which provides comprehensive vocational rehabilitation and community services. Clients include people who have disabilities or who are disadvantaged and not readily being absorbed into the competitive labor market.

\$600,000 toward a capital campaign for expansion of South Side and Fayette County facilities.

Health Education Center, Inc.
Pittsburgh, Pennsylvania

The Health Education Center, a nonprofit affiliate of Blue Cross of Western Pennsylvania, is recognized locally and nationally for its innovative programs to reduce risk for preventable diseases and disability. In its 18 years of operating community-based programs, the center has focused on improving primary care services and health practices for low-income families.

\$300,000 payable over two years toward support of a wellness program for public housing residents.

Hosanna House, Inc.
Wilkinsburg, Pennsylvania

Established by Covenant Church of Pittsburgh in 1990, Hosanna House is transforming a vacant middle school building into the Wilkinsburg Community Center. The project's goal is to convene under one roof a variety of programs and services which will address the intellectual, emotional, economic, social, physical, and spiritual needs of individuals in the community.

\$600,000 toward creating a community center in Wilkinsburg.

Human Services Center Corporation
Turtle Creek, Pennsylvania

The Human Services Center is a social services "mall" serving eastern Allegheny County communities of the Westinghouse/Turtle Creek Valley. The center seeks to improve the quality of life in the community by developing a multipurpose center which will decentralize and coordinate human services on a regional basis and assure local residents access to the diverse services they need.

\$80,000 payable over three years toward operating support.

Louise Child Care Center *Pittsburgh, Pennsylvania*

Lack of day care for their children prevents many addicted women from participating in treatment programs. Working with other agencies to serve young addicted women and their children, Louise Child Care's McKeesport Center provides day care which enables these women to take advantage of rehabilitation services offered through collaborating agencies.

\$10,000 payable over three years toward interim operating support for the McKeesport Center.

Neighborhood Centers Association *Pittsburgh, Pennsylvania*

Neighborhood Centers Association, a community-based multiservice agency serving Pittsburgh's North Side residents, has developed a comprehensive treatment and counseling program for pregnant teenagers and mothers under the age of 21. Implemented in 1992, the program provides services and support to increase the likelihood that these young adolescents will become self-sufficient, have and maintain healthy children, learn parenting skills, and establish a positive relationship with the children's father and their own parents.

\$175,000 program support for services to pregnant and parenting adolescents in Pittsburgh's North Side community.

Northview Heights Citizens Council *Pittsburgh, Pennsylvania*

The Citizens Council of Northview Heights Public Housing Development, located on Pittsburgh's North Side, was established by the residents in 1991 to encourage and carry out health, education, recreation, and cultural programs that promote self-sufficiency, and economic and social well-being among its residents.

\$150,000 payable over two years toward operating support for "Healthy Start, Healthy Family, Healthy Community," a permanent family support initiative to assess needs, access services, evaluate delivery of services, and advocate for the residents.

Pennsylvania Association for the Blind *Pittsburgh, Pennsylvania*

Founded in 1910 as the Pittsburgh Workshop for the Adult Blind, the association provides the appropriate programs and services in Allegheny County for people who are vision-impaired, many of whom are mentally and physically challenged. The association is committed to designing and implementing quality programs which promote productivity, self-reliance, and dignity for the visually impaired and offers a direct service for the prevention of blindness in the community.

\$150,000 toward the program portion of a capital campaign.

Pennsylvania Organization for Women in Early Recovery *Pittsburgh, Pennsylvania*

Pennsylvania Organization for Women in Early Recovery is a community-based halfway house program located in Swissvale. It services women from Allegheny County and the surrounding region who have completed a primary treatment program for alcohol and drug addiction, offering a wide range of therapeutic and educational support within a safe, sober, and caring environment.

\$75,000 payable over three years to support the administrative enhancement component of a fund development program.

Phoebe Foundation, Inc. *Albany, Georgia*

The Phoebe Foundation administers emergency funds for flood relief efforts in the Dougherty and Baker County areas of southwest Georgia. These funds help meet the most critical needs of residents affected by heavy rains and subsequent flooding which occurred in July, 1994.

\$100,000 toward emergency flood relief efforts.

Pittsburgh AIDS Task Force, Inc.
Pittsburgh, Pennsylvania

Founded in 1985 by a group of volunteers, the Pittsburgh AIDS Task Force provides services to people living with AIDS and HIV infection in Allegheny County and the surrounding areas. It endeavors to improve the health and quality of life of people living with AIDS, to stop new infections from occurring, and to enable the public-at-large to respond to the AIDS crisis with knowledge and compassion.

\$200,000 payable over two years to support the volunteer development program.

The Pittsburgh Foundation
Pittsburgh, Pennsylvania

The Pittsburgh Foundation is serving as fiscal agent for funds to support the Mayor's Youth Initiative. This initiative is a collaborative partnership among Pittsburgh City departments and several foundations to address and reduce the problems of youth violence.

\$40,000 payable over two years as a planning grant to support the Mayor's Youth Initiative.

Pittsburgh Mercy Foundation
Pittsburgh, Pennsylvania

Founded in 1992 by a Mercy Hospital faculty member, Operation Safety Net is the first medical outreach program to address the unique needs and challenges presented by the unsheltered homeless population. Street teams comprised of formerly homeless and medical volunteers perform medical rounds among the homeless living in the streets, offering unconditional medical and follow-up care. Because of its success in Pittsburgh, the program is a model for other communities, locally as well as nationally.

\$100,000 toward operating support of the Operation Safety Net program which provides assistance to homeless people.

The Pittsburgh Oratory
Pittsburgh, Pennsylvania

For the past thirty years, the Fathers of the Pittsburgh Oratory have been the official Catholic chaplains for the University of Pittsburgh, Carnegie Mellon University and Chatham College. In actual practice, the scope of their activities has extended far beyond providing for specific religious needs of Catholic students. A major thrust of their work has been to provide a warm and friendly environment where students of any faith, or no faith at all, can drop in to discuss issues affecting them personally on a one-to-one basis.

\$250,000 toward a capital campaign for a new student center to provide facilities for meetings, recreation, worship, and individual counseling.

The Pittsburgh Pastoral Institute
Pittsburgh, Pennsylvania

The Pastoral Institute, working collaboratively with local churches and agencies in the East End of Pittsburgh, has established Families and Youth 2000 as a pilot prevention project. Its goals are to bring church-based activities and support services to youth and families to engender the development of Christian life skills, values, and behaviors.

\$75,000 toward operating support for Families and Youth 2000.

The Pittsburgh Project
Pittsburgh, Pennsylvania

The Pittsburgh Project was founded as an outreach program of Memorial Park Presbyterian Church in the North Hills district of Pittsburgh. It is committed to involving young people in volunteer service to elderly, poor, widowed, or disabled home owners. In addition, it has started an after school program for children living in a poverty stricken section of Pittsburgh's North Side.

\$200,000 toward operating support for development of an after school program.

United Mental Health
Pittsburgh, Pennsylvania

Since 1959, United Mental Health has been a leading advocate and referral agency for adults and children who are struggling with mental illness, emotional disorders, and/or substance abuse. It is the area's only independent individual and systems advocacy agency presenting the "consumer's" view.

\$25,000 toward operating support.

The United Way of Allegheny County
Pittsburgh, Pennsylvania

Since its inception in 1990 with 1,200 volunteers, the United Way Day of Caring has become a signature annual event because it does so much to verify the value of time and money given to support human care needs. By 1994 the Day of Caring attracted over 6,000 volunteers participating in projects at more than 270 nonprofit sites in Allegheny County with an estimated value of work performed that day in excess of \$488,000.

\$10,000 toward support for Day of Caring.

University of Pittsburgh School of Social Work
Pittsburgh, Pennsylvania

In November, the School of Social Work convened a three-day conference on community building. The primary objectives of the conference were to promote an exchange of information and resources, highlight ideas and techniques for conference participants to use within their communities, and develop an agenda for action to address issues and problems identified by the participants.

\$10,000 toward support of a conference on "Community Building Through Community Organizing."

Visiting Nurses Association of Butler County
Butler, Pennsylvania

The Visiting Nurses Association of Butler County, currently serving Armstrong and Butler Counties along with northern Allegheny County, northwest Westmoreland County and portions of Beaver and Mercer Counties, provides health care to homebound persons without discrimination and regardless of ability to pay. Since its inception in 1967, the VNA has seen the need for its services grow dramatically. Home visits during the first year of operation numbered 1,052. This number doubled during the second year, and by 1991 increased to over 100,000.

\$30,000 toward support for the Free Care Fund.

Washington-Green Prevention Corp. (VISION)
Washington, Pennsylvania

VISION: Comprehensive Prevention Services was established in 1976 as a drug/alcohol prevention agency. Today VISION partners with schools, communities, and organizations in southwestern Pennsylvania to provide a broad array of prevention-related educational services.

\$100,000 toward program support.

Waynesburg College
Waynesburg, Pennsylvania

The general service mission of Waynesburg College is to improve the quality of life in Greene County. It strives to stimulate in its students a commitment to a life of learning, the service to others, and an enduring respect for Judeo-Christian beliefs. It is the only college in Pennsylvania, and one of the first in the nation, to build service directly into the curriculum.

\$300,000 payable over three years to support community service efforts in Greene County.

The Wesley Institute
Pittsburgh, Pennsylvania

The Wesley Institute provides educational programs, residential treatment, day care, and support services to families and children, many of whom have special needs. With programs designed to build self-esteem and allow for personal growth and development, the institute has grown from serving two children in 1965 to over 500 annually, thanks in large part to an active volunteer program.

\$350,000 toward a capital campaign.

The Western Pennsylvania School for Blind Children

Pittsburgh, Pennsylvania

The Western Pennsylvania School for Blind Children was founded in 1887 with the intent of providing education to children from the region who are blind. In 1984, its mission expanded to include training and services to youngsters who are multihandicapped.

\$150,000 toward a capital campaign for renovations to the Mary Schenley Building, the school's original structure built in 1894.

Womansplace

Pittsburgh, Pennsylvania

Founded in 1976, Womansplace is an independent agency providing services and shelter for abused women and their children. Womansplace also strives to educate the public on issues of domestic violence through community education services, volunteer training, school presentations, and community outreach projects.

\$5,000 toward operating support.

Women's Center & Shelter of Greater Pittsburgh

Pittsburgh, Pennsylvania

The Women's Center & Shelter of Greater Pittsburgh offers emergency shelter and support services for women and children experiencing domestic violence. One of the first six domestic violence shelters in the United States, the center was founded in 1974 to provide a supportive, nurturing environment for women and children in crisis.

\$600,000 toward a capital campaign to purchase and renovate a new facility.

Young Men's Christian Association of Pittsburgh

Pittsburgh, Pennsylvania

The Young Men's Christian Association (YMCA) of Pittsburgh was founded as a nationally affiliated character building organization in March of 1954. Since then it has been continually evolving as a human service agency whose mission is to actively promote a set of fundamental values for living.

\$3,000 for travel expenses for youngsters from the inner city of Pittsburgh to attend East Field Basketball Tournament in Massachusetts.

Young Women's Christian Association of Greensburg

Greensburg, Pennsylvania

The mission of the Greensburg YWCA is to "create opportunities for women's growth, leadership and power in order to maintain a common vision — peace, justice, freedom and dignity for all people." The YWCA serves the diverse segments of the community in critical areas of education, recreation, and family life.

\$50,000 toward a capital building campaign to provide space for expanding program needs.

Young Women's Christian Association of McKeesport

McKeesport, Pennsylvania

The YWCA of McKeesport is dedicated to creating a bond between the members, staff, and the neighborhood to satisfy the broad range of needs for all. Its programs provide guidance, training, and developmental activities to enhance personal and professional growth of all people in preparation for future opportunities.

\$50,000 toward operating support for a community youth outreach program.

Total Human Services

\$7,769,000

EDUCATION



1994 Recipients of four-year NEED scholarships provided by the Foundation are, from left to right: Cory Ross, LaShawn Neal, Deborah Rogers, LaMar Hortman, seated, Kimberly Mosby.

Allegheny Policy Council for Youth and Workforce Development *Pittsburgh, Pennsylvania*

An offspring of the Allegheny Conference, the Policy Council was established to improve the education of youth in the Greater Pittsburgh area. Responding to the national goal for enhanced science and math literacy in America, the council convened a conference to address the needs of schools and teachers, highlight current math and science initiatives, and explore the purpose and potential of a Regional Math and Science Learning Institute.

\$3,000 to support the planning process for a Regional Math and Science Learning Institute.

Berea College *Berea, Kentucky*

Berea College is a unique college specializing in the education of Appalachian students, with a complement of foreign students. Because the college is committed to providing a high-quality education at low cost, admission is based on financial need and students are not charged tuition. They must, however, contribute toward room and board, and the Student Labor Program requires every Berea student to work 10-15 hours per week in a college job in addition to his or her academic load.

\$45,000 to support a four-year scholarship for a student from southwestern Pennsylvania.

Bloomfield-Garfield Corporation *Pittsburgh, Pennsylvania*

This community-based organization acts as an advocate developer and planner/facilitator on behalf of residents in the Bloomfield-Garfield sections of Pittsburgh. In addition to encouraging economic development, Bloomfield-Garfield Corporation operates programs which address the needs of its residents. FACES, one of such programs, is a community-family-school collaborative that was formed to address the needs of Friendship Academy and its students.

\$50,000 toward operating support for an after-school program at Friendship Academy Collaboration for Educational Success (FACES).

The Carnegie *Pittsburgh, Pennsylvania*

The Carnegie provides central oversight for housing, coordinating, and guiding the development of a regional math and science literacy program. The program's mission is to coordinate efforts and focus resources on a regional approach to math and science education from kindergarten through twelfth grade. Its goal is to prepare Allegheny County students in math and science to ensure their fullest participation as citizens and workers in the twenty-first century.

\$15,000 toward program support for development of a prototype for the Regional Math and Science Institute.

\$140,000 toward start-up costs and three-year operating support for the Regional Math/Science Collaborative.

Chatham College *Pittsburgh, Pennsylvania*

Chatham College is a 125-year-old liberal arts college that offers baccalaureate degrees to women, and professional master's degrees to both men and women. As a result of its recent strategic planning process, the college is undertaking initiatives to expand its curriculum to enhance student enrollment, including development of the Rachel Carson Institute as a center for research and education in environmental science and public policy.

\$250,000 toward the President's Discretionary Fund.

Duquesne University *Pittsburgh, Pennsylvania*

Duquesne University's A. J. Palumbo School of Business Administration has identified a need for a scholarship fund that is designated specifically for sophomores, juniors, and seniors who have demonstrated high academic achievement but who, for various reasons, did not qualify for financial support when entering their freshman year.

\$30,000 toward scholarship funds for upperclassmen in the A. J. Palumbo School of Business Administration.

Fund for the Advancement of Minorities Through Education

Pittsburgh, Pennsylvania

FAME is a cooperative educational program among The Ellis School, St. Edmund's Academy, The Winchester-Thurston School, Shady Side Academy, and Sewickley Academy. Its mission is to use the educational and academic resources of these independent schools to enhance, promote, and support multicultural education. The program hopes to develop minority leadership in Greater Pittsburgh by providing a superior educational foundation to young academic achievers through need-based scholarships.

\$1,000,000 (challenge grant) toward support for the minority scholarship fund.

Junior Achievement of Southwest Pennsylvania, Inc.

Pittsburgh, Pennsylvania

Junior Achievement's mission is to educate and inspire young people to value free enterprise, understand business and economics, and be workforce ready. The Southwest Pennsylvania chapter has developed a program for kindergarten through seventh grades in an effort to demonstrate to youngsters at a very early age the relevance of education to the workplace.

\$250,000 toward program support.

Laurel Highlands Educational Foundation, Inc.

Ligonier, Pennsylvania

The Laurel Highlands Educational Foundation was established in 1985 to educate the public about tourism in the Fayette, Greene, Somerset, Westmoreland, and Cambria county areas which make up the Laurel Highlands.

\$7,000 toward production of an educational video about the Whiskey Rebellion.

McKeesport Pre-School for Exceptional Children

McKeesport, Pennsylvania

The pre-school serves developmentally delayed three- to five-year-old children from southeastern Allegheny County with diagnoses of mental retardation, social or emotional maladjustment, or physical challenges. The school provides individual developmental experiences for each child and preparation for a beneficial, independent living environment. The school also provides an "inclusion" component in which normally developing children comprise approximately 15% of the student population.

\$75,000 toward a capital campaign for construction of a new educational complex.

Negro Educational Emergency Drive

Pittsburgh, Pennsylvania

The Negro Educational Emergency Drive provides educational counseling and financial assistance to young people who want to pursue higher education.

\$105,000 payable over four years toward scholarship support.

Pittsburgh Voyager

Pittsburgh, Pennsylvania

Pittsburgh Voyager is a river-based learning program that integrates a hands-on, classroom curriculum with an educational adventure on Pittsburgh's rivers. Voyager's mission is to promote the development of a generation of students eager to learn, motivated to pursue higher educational goals, and equipped with both the personal values and the basic and critical thinking skills needed to enter a more competitive global workforce.

\$200,000 payable over two years toward operating support.

Seton Hill College

Greensburg, Pennsylvania

Founded by the Sisters of Charity in 1893, Seton Hill is an independent Catholic, liberal arts college. Although men are admitted to the School of Visual and Performing Arts, the institution characterizes itself as a college for women. Seton Hill is located in the City of Greensburg and is one of the city's largest employers.

\$300,000 toward a capital campaign for building renovations.

United Negro College Fund, Inc.
New York, New York

The United Negro College Fund represents a consortium of 41 historically black private accredited colleges and universities. Its primary mission is to raise general operating funds for its member institutions.

\$50,000 toward operating support.

**University of Pittsburgh
Center for Economic Education**
Pittsburgh, Pennsylvania

The Center for Economic Education is an extension of the Joseph M. Katz Graduate School of Business. In partnership with the Pennsylvania Council on Economic Education, the center provides a variety of educational programs for kindergarten through twelfth grade area students. The programs seek to promote economic literacy and an understanding of the free enterprise system.

\$50,000 toward three years operating support.

**University of Pittsburgh
School of Medicine**
Pittsburgh, Pennsylvania

Recognizing that the high cost of obtaining a medical degree can be particularly difficult for African-American students, the School of Medicine at the University of Pittsburgh seeks to raise scholarship money.

\$104,000 toward minority scholarship support.

Valley School of Ligonier
Ligonier, Pennsylvania

Founded in 1947, Valley School of Ligonier has a current enrollment of 198 students in grades kindergarten through nine. Valley School is an independent school which provides an educational alternative for families within a thirty-mile radius.

\$2,000,000 toward a capital campaign for renovation and expansion.

**Westmoreland County
Community College**
Youngwood, Pennsylvania

Westmoreland County Community College offers a broad range of affordable academic programs that prepare students for transfer to four-year universities or for immediate employment in vocational and technical fields. Twenty-three years ago, it started in rented classrooms at a local high school, offering nine evening classes to 250 students. This past fall, nearly 7,000 students registered for credit courses that could eventually earn them degrees or certificates in more than 35 majors.

\$500,000 toward a capital campaign to renovate and expand facilities.

**Woods Hole Oceanographic
Institution**

Woods Hole, Massachusetts

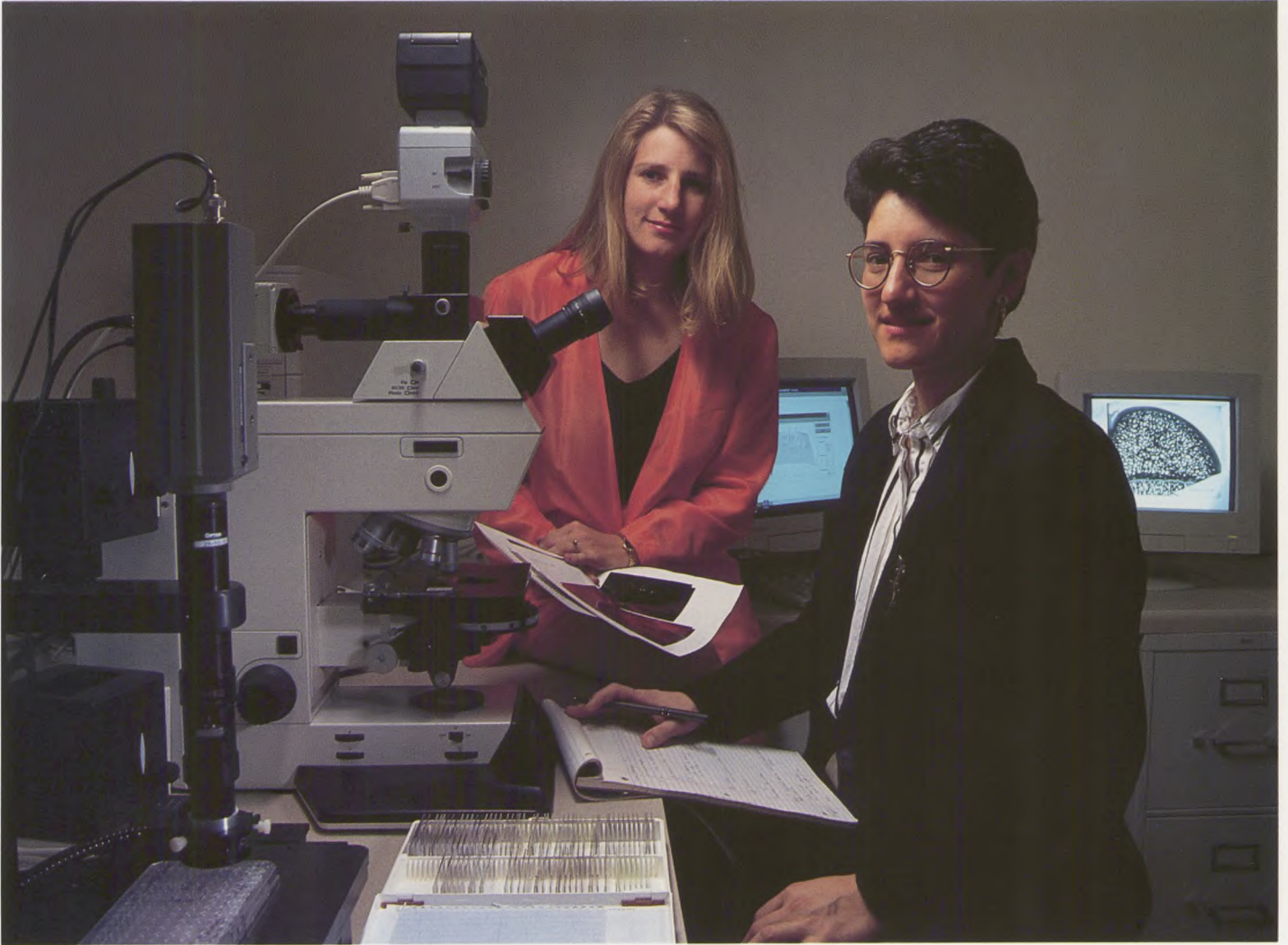
Since its inception in 1930, the institution's purpose has been to study the oceans and to advance a wise and environmentally sound use of their resources. Today, Woods Hole focuses much of its research on such subjects as global warming, understanding the red tide, and improving our knowledge of earthquakes and problem areas along coastal regions.

\$500,000 toward a capital campaign to help sustain the high quality of research performed by the institution.

Total Education

\$5,674,000

MEDICINE



*Assistant Investigators at work in the Imaging Facility
of the Magee-Womens Research Institute.*

Lahey Clinic Foundation, Inc.
Burlington, Massachusetts

Lahey Clinic is a comprehensive, multispecialty diagnostic treatment center located in Burlington, Massachusetts. The clinic was founded in 1923 by Frank H. Lahey, M.D., a world-renowned expert in thyroid surgery. For nearly 75 years, Lahey Clinic has maintained its reputation for high quality care, with patients travelling from distant parts of the globe to be cured of rare diseases and common maladies.

\$500,000 toward Diamond Anniversary Capital Campaign and more specifically in support of its Urology Department.

Magee-Womens Health Foundation
Pittsburgh, Pennsylvania

Magee-Womens Hospital is committed to enhancing the health care and well-being of women, infants, and their families. The hospital seeks to build on its heritage of service through the provision of excellence in clinical care; education for patients, physicians, students, staff and community; and leadership in seeking and applying new knowledge through research. This mission is achieved through a strong, mutually beneficial relationship with the University of Pittsburgh. Magee-Womens Research Institute is the first center in the United States to concentrate exclusively on women's health, with strong emphasis on health problems of the mature woman.

\$500,000 toward funding for the Magee-Womens Research Institute.

**University of Pittsburgh
 School of Medicine**
Pittsburgh, Pennsylvania

For more than thirty years, researchers at the School of Medicine have tracked a western Pennsylvania family afflicted with an increased frequency of a rare tumor of the adrenal gland known as pheochromocytoma. In 1988, the Richard King Mellon Foundation provided \$10,000 to the school toward continued research into this debilitating and often fatal condition which causes severe hypertension. Over the next two years, researchers hope to identify and locate the gene responsible for the disease.

\$10,000 toward a continued research study of pheochromocytoma.

**University of Pittsburgh
 Medical Center**
Pittsburgh, Pennsylvania

To further complement its opportunities for minority students in the health sciences, the university implemented a minority summer internship program in its Office of State Government Relations. This early exposure to the public policy process allows the graduate student to better understand the important role of state government in health care delivery, how research can enhance the formulation of meaningful public health policy, and helps to prepare the student for a career as a senior policy official.

\$2,000 for internship support.

Total Medicine

\$1,012,000

CIVIC AFFAIRS



A day care infant and her caregiver visit with a kindergarten class at the Jewish Community Center.

**Allegheny Conference on
Community Development**
Pittsburgh, Pennsylvania

The conference is an important vehicle for convening corporate and foundation leaders around issues that improve the quality of life in Allegheny County. The Agenda Development Fund, established in 1992, comprises monies contributed by private, noncorporate Pittsburgh area foundations. The fund supports the conference's agenda, and allows it to respond quickly and flexibly to changing opportunities for the betterment of our region.

\$125,000 toward support of the Agenda Development Fund.

Council on Foundations, Inc.
Washington, District of Columbia

Founded in 1949, the council works to promote, encourage, and enhance the contributions and responsiveness of organized grantmaking to society and the public good.

\$85,000 toward operating support for 1994 and 1995.

**County of Allegheny
Allegheny West Authority**
Pittsburgh, Pennsylvania

The Allegheny West Authority was established to focus efforts on the economic development potential of the new Pittsburgh International Airport. The authority is developing a strategic plan for the development, beautification, and preservation of the entire Parkway West between downtown Pittsburgh and the airport.

\$100,000 (conditional) toward support of the Three Rivers Parkway Project.

**The Downtown Management
Organization***
Pittsburgh, Pennsylvania

The organization's mission is to establish and maintain an environment that will further strengthen downtown Pittsburgh as the regional business and cultural center and make downtown the region's premier location to work, shop, live, and visit. To accomplish its mission, the organization will focus its efforts on issues of public safety, parking, transit and access, marketing, and cleanliness and attractiveness.

\$100,000 payable over two years toward operating support.

**Grantmakers of
Western Pennsylvania**
Pittsburgh, Pennsylvania

Grantmakers is a professional society of member grantmaking organizations dedicated to promoting effective philanthropy in western Pennsylvania.

\$4,690 toward operating support.

\$6,000 toward program support.

Independent Sector
Washington, District of Columbia

Independent Sector is a nonprofit coalition of more than 800 corporate, foundation, and voluntary organization members. The organization's mission is to create a national forum capable of encouraging the giving, volunteering, and not-for-profit initiatives that help better serve people, communities, and causes.

\$7,400 toward operating support.

The Mon Valley Initiative
Homestead, Pennsylvania

The initiative is dedicated to revitalizing the quality of life in the Mon Valley, and its community and economic development programs range from empowerment and organization of local leaders to attracting and retaining businesses and jobs. In order to continue its work over the next five years, MVI has launched a capital campaign to raise operating funds, and to support its Community Investment and Pre-Development Funds.

\$450,000 payable over three years toward a capital campaign.

*Renamed Pittsburgh Downtown Partnership

Oakland Planning and Development Corporation
Pittsburgh, Pennsylvania

Oakland Planning and Development Corporation's role encompasses community building, economic development, and housing in the Oakland area of Pittsburgh. The corporation maintains an active partnership with community organizations in Oakland working toward the betterment of the neighborhoods and commercial districts.

\$150,000 payable over three years toward operating support.

Penn's Southwest Association
Pittsburgh, Pennsylvania

Penn's Southwest Association is the economic development organization created to implement a marketing strategy for revitalizing the nine counties of Allegheny, Armstrong, Beaver, Butler, Fayette, Greene, Lawrence, Washington, and Westmoreland.

\$220,000 toward operating support.

Pennsylvania Economy League, Inc. Western Division
Pittsburgh, Pennsylvania

Chartered in 1936 by business leaders throughout Pennsylvania, the Economy League provides information and support to the business, civic, and governmental leadership of western Pennsylvania in their efforts to make our region a better place to live, work, and do business. The league's consolidation program seeks to foster consolidation of local governments and local public services in western Pennsylvania.

\$75,000 toward a program to develop statewide policies to encourage local governments to consolidate.

United Jewish Federation of Greater Pittsburgh
Pittsburgh, Pennsylvania

The federation's Renaissance Campaign is designed to build and renovate seven of Pittsburgh's leading Jewish agencies in the city neighborhood of Squirrel Hill. While each is unique in mission and needs, these agencies have convened with a common vision to build, strengthen, and secure the future of the community. Renaissance represents the largest capital investment in any Pittsburgh neighborhood for the foreseeable future.

\$1,000,000 (conditional) payable over two years toward a capital campaign.

United Way of Allegheny County Partners in Parks Program
Pittsburgh, Pennsylvania

United Way partners with Allegheny County and Citiparks to convene community volunteers in an effort to improve public parks. Sample park projects include the removal of wild grapevines which are destructive to trees, restoring monuments, and creating a park watch program to maintain neighborhood parks.

\$50,000 toward operating support for Partners in Parks Volunteer Program.

University of Pittsburgh Graduate School of Public and International Affairs
Pittsburgh, Pennsylvania

The Graduate School of Public and International Affairs has developed a Public Policy and Management Initiative with the City of Pittsburgh. The objectives are to expand the quantity and quality of policy and management analysis available to the city, to create a concrete mechanism to develop viable solutions to the problems of Pittsburgh, and to increase the flow of well-trained policy analysts and managers into public service in the city by apprentice/residency programs.

\$100,000 payable over two years toward support of internships in the City of Pittsburgh offices.

**Urban Redevelopment Authority
of Pittsburgh**

Pittsburgh, Pennsylvania

As part of a larger public/private partnership, the URA is engaged in a plan to develop Crawford Square, an 18.5 acre site in the Crawford-Roberts section of the Hill District. Comprising rental and for-sale housing overlooking the Civic Arena and downtown Pittsburgh, the plan represents the largest residential redevelopment effort undertaken in the city in the last thirty years. The first phase of this project is complete and provides opportunities for current Hill District residents and people from other areas to rent or buy affordable housing.

\$300,000 toward support of Crawford Square Phase II.

Total Civic Affairs

\$2,767,090

CULTURAL ACTIVITIES



A youngster is coached by a musician during one of the Pittsburgh Symphony Orchestra's Fiddlesticks concerts.

Artists Raising the Consciousness of Humanity, Inc.

Pittsburgh, Pennsylvania

ARCH productions use drama as a means of involving young people in exploring social issues and providing them with nontraditional, nonviolent alternatives for expression. Through the experience of creating and performing in theatrical productions, youth participants emerge as positive role models and peer educators on prevention of violent behavior.

\$50,000 toward operating support.

The Children's Festival Chorus, Inc.

Pittsburgh, Pennsylvania

The Children's Festival Chorus provides stimulating and challenging choral education of the highest artistic standards for children in the Pittsburgh metropolitan area through professional music training and unique performance experiences. Founded in 1983, the chorus has grown from a group of 28 children to more than 110 singers who are selected on the basis of competitive audition.

\$10,000 toward operating support.

City Theatre Company, Inc.

Pittsburgh, Pennsylvania

City Theatre, located on Pittsburgh's South Side, provides creative, contemporary presentations which have won accolades from regional and national evaluators and critics.

\$28,000 toward operating support.

Civic Light Opera Association of Greater Pittsburgh

Pittsburgh, Pennsylvania

The Civic Light Opera has produced and presented high quality musical theater productions in greater Pittsburgh for nearly fifty years and is recognized nationally for its artistic excellence. In addition to producing more than 80 performances each season, it operates a number of outreach and educational activities which increase its contributions to the community.

\$20,000 toward operating support for continuation and expansion of a pilot after-school project.

Ligonier Valley Historical Society

Ligonier, Pennsylvania

The mission of the Ligonier Valley Historical Society is to preserve the history of the Ligonier Valley and to disseminate historical information.

\$50,000 toward a capital campaign for roof repairs on the Compass Inn Museum.

The Mattress Factory, Ltd.

Pittsburgh, Pennsylvania

The Mattress Factory is a museum of contemporary art located in the Mexican War Streets section of Pittsburgh's North Side. The alternative museum is now recognized internationally for the high quality of its artistic program, which is centered around the commission, presentation, and collection of new site-specific artistic installations that are developed in on-site residencies.

\$150,000 payable over three years toward operating support.

Phipps Friends*

Pittsburgh, Pennsylvania

Phipps Friends was created in 1985 for the purpose of raising and expending funds for the restoration and improvement of the Phipps Conservatory; educating the public concerning plant life through volunteer led tours; and broadening community involvement with the conservatory through specific educational and cultural programs. In 1991, Phipps Friends initiated a plan to help the Pittsburgh Conservatory begin to operate as a public/private partnership with the City of Pittsburgh.

\$100,000 toward operating support for the Phipps Conservatory pending funding from the Allegheny Regional Asset District in 1995.

Pittsburgh Ballet Theatre, Inc.

Pittsburgh, Pennsylvania

Under the skilled direction of Artistic Director Patricia Wilde, the Pittsburgh Ballet Theatre remains among the finest regional companies in the United States. Now in its twenty-fifth anniversary season, the ballet continues its mission of artistic excellence and community service.

\$135,000 toward operating support for the 1994-1995 season.

*Renamed Phipps Conservatory, Inc.

Cultural Activities

CONTINUED

Pittsburgh Opera, Inc. *Pittsburgh, Pennsylvania*

The opera prides itself on being able to provide Pittsburgh with high-caliber performances, and continues to expand audiences through outreach, education, and cultural programs directed to children and adults.

\$97,000 toward operating support for the 1994-1995 season.

The Pittsburgh Public Theater Corporation *Pittsburgh, Pennsylvania*

Guided by the vision of its new artistic and management leadership team, the Public Theater seeks to continue its artistic growth, to promote audience diversity through presentations that reach the region's varied ethnic and cultural populations, and to expand its outreach programs to the disadvantaged and other special patrons.

\$112,000 toward operating support for the 1994-1995 season.

The Pittsburgh Symphony Society *Pittsburgh, Pennsylvania*

The Pittsburgh Symphony Orchestra continues to enjoy a national reputation while upholding its pledge to provide world-class performances and community programs and services to the people of this region.

\$155,000 toward operating support for the 1994-1995 season.

\$30,000 toward support for a Community Outreach Program.

The Pittsburgh Trust for Cultural Resources *Pittsburgh, Pennsylvania*

The Pittsburgh Trust is dedicated to expanding the arts in all disciplines. Its goals are to revitalize a downtown area of Pittsburgh designated as the Cultural District and, through expansion of varied arts activities, to improve the quality of life and broaden the economic development of the cultural district.

\$1,171,792 toward capital support.

River City Brass Band *Pittsburgh, Pennsylvania*

Founded in 1981, River City Brass Band nurtures the appreciation of brass band and brass ensemble music by a broad spectrum of the public through its performances, recordings and educational programs, focusing primarily on audiences throughout western Pennsylvania.

\$50,000 to help reestablish a cash reserve.

Saltworks Theatre Company *Pittsburgh, Pennsylvania*

Saltworks Theatre is a professional arts organization which addresses the spiritual, physical, and emotional needs of children, youth, and families through the creation and performance of contemporary dramatic works. The company was founded on the belief that lives can be positively changed through the power of theater.

\$150,000 payable equally over two years toward operating support.

The Society for Contemporary Crafts *Pittsburgh, Pennsylvania*

The society enriches the life of the community by presenting contemporary art in craft media and by exploring the relationship between that art and the forces that shape its creation. As the sole nonprofit cultural center in the Strip District, the society contributes free space where visitors can look at exhibitions, participate in free children's art activities, browse, and congregate.

\$150,000 toward facility renovations to significantly enhance both the immediate area as well as the society's presence in the Strip District.

Total Cultural Activities

\$2,458,792

RICHARD KING MELLON FOUNDATION
BALANCE SHEETS

	December 31,	
ASSETS	1994	1993
Cash and receivables	\$ 3,980,612	\$ 2,877,152
Investments, at market:		
Stocks	665,960,056	681,540,321
Long-term debt instruments	139,357,400	176,932,184
Temporary investments	93,394,806	70,538,773
Other investments	138,770,980	138,528,137
Total	1,037,483,242	1,067,539,415
Program-related investments	19,631,905	18,487,574
Other assets	901,869	1,011,746
Total assets	\$1,061,997,628	\$1,089,915,887
LIABILITIES AND FUND BALANCE		
Liabilities		
Grants approved but not paid	\$ 14,671,500	\$ 13,850,978
Appropriations for program-related investments	19,631,905	18,487,574
Total	34,303,405	32,338,552
Fund balance	1,027,694,223	1,057,577,335
Total liabilities and fund balance	\$1,061,997,628	\$1,089,915,887

See notes to financial statements.

RICHARD KING MELLON FOUNDATION
**STATEMENTS OF INCOME,
EXPENSES AND CHANGES IN FUND BALANCES**

For the year ended December 31,	1994	1993
Investment income	\$ 35,518,308	\$ 33,108,446
Expenses		
Administrative and investment expenses	7,434,718	6,487,984
Provision for federal taxes	1,690,425	2,638,819
	<u>9,125,143</u>	<u>9,126,803</u>
Net investment income	26,393,165	23,981,643
Grants & appropriations approved	40,921,628	51,369,980
Deficiency of net investment income over approvals	(14,528,463)	(27,388,337)
Net realized gain from disposition of investments	60,878,789	97,913,157
Unrealized appreciation (depreciation) on investments	(76,233,438)	34,888,084
	<u>(15,354,649)</u>	<u>132,801,241</u>
Increase (decrease) in fund balance	(29,883,112)	105,412,904
Fund balance:		
Beginning of year	1,057,577,335	952,164,431
End of year	<u>\$1,027,694,223</u>	<u>\$1,057,577,335</u>

See notes to financial statements.

RICHARD KING MELLON FOUNDATION
SUMMARY OF INVESTMENTS

December 31, 1994

	Book Value	Market Quotations
STOCKS		
Domestic equities	\$297,580,900	\$ 379,323,861
Foreign equities	252,913,690	286,636,195
TOTAL STOCKS	<u>550,494,590</u>	<u>665,960,056</u>
LONG-TERM DEBT INSTRUMENTS		
Corporate bonds	22,583,642	21,590,019
United States Government and Government Agencies obligations	111,197,790	110,337,941
Other long-term obligations	5,692,796	5,501,132
Foreign debt obligations	2,094,279	1,928,308
TOTAL LONG-TERM DEBT INSTRUMENTS	<u>141,568,507</u>	<u>139,357,400</u>
TEMPORARY INVESTMENTS		
Demand and interest-bearing notes	87,274,736	87,309,729
Foreign short-term investments	5,374,524	6,085,077
TOTAL TEMPORARY INVESTMENTS	<u>92,649,260</u>	<u>93,394,806</u>
OTHER INVESTMENTS		
Hedge funds	47,394,596	50,816,798
Venture capital	42,986,173	52,544,715
Realty	20,823,952	22,687,110
Other	9,428,631	12,722,357
TOTAL OTHER INVESTMENTS	<u>120,633,352</u>	<u>138,770,980</u>
TOTAL INVESTMENTS	<u>\$905,345,709</u>	<u>\$1,037,483,242</u>

See notes to financial statements.

INDEPENDENT AUDITOR'S REPORT

NOTES TO FINANCIAL STATEMENTS

NOTE 1—Significant Accounting Policies

Basis of Accounting

The accounts of the Foundation, except for federal taxes and grants approved but not paid, are maintained on the cash basis, the result of which is not materially different from the accrual basis of accounting.

Investments

For financial reporting purposes, investments are stated primarily at market quotations which, in the case of large holdings, do not necessarily represent realizable values. Market quotations of foreign investments include the effect of the conversion into U.S. dollars at the foreign currency exchange rate in effect at year end. Investments for which market quotations are not available are stated at estimated values as determined by investment managers. The book value of direct investments shown on the summary of investments is cost, except for donated assets which are valued at the market quotations at the date of receipt by the Foundation; investments in partnerships are accounted for under the equity method, except for venture capital partnerships which are at cost.

Realized gain or loss from dispositions of investments is determined by specific cost identification. Unrealized appreciation of investments represents the change in the difference between market quotations and the total book value of investments held at the beginning and end of the year.

NOTE 2—Program-related Investments

Beginning in 1988, the Foundation has invested in land, land rights and interests in land pursuant to the Foundation's American Land Conservation Program. The purpose of the investment is land conservation, wildlife preservation and the protection of open and scenic spaces. The properties remaining in the program at December 31, 1994 and 1993 are stated at cost. The properties donated to conservation organizations during 1994 and 1993 were distributed at fair market value.

NOTE 3—Federal Taxes

The Foundation is exempt from federal income taxes under Section 501(c) (3) of the Internal Revenue Code. The Foundation is subject to a federal excise tax equal to two percent of net investment income, which consists of interest and dividend income, realized gains on sales of investments less realized losses to the extent that they can be offset against realized gains, less related investment expenses. For 1994 and 1993, the Foundation provided for federal excise tax of two percent. In 1993, the Foundation was subject to a business income tax on certain activities of several of the partnerships in which the Foundation has invested. In 1994, the Foundation was not subject to any business income tax.

NOTE 4—Commitments

The Foundation is a Limited Partner in several limited partnerships for investment purposes. At December 31, 1994 and 1993 the Foundation had contractually committed to additional investments of \$29,942,461 and \$27,348,909.

To the Trustees of
Richard King Mellon Foundation:

We have audited the accompanying balance sheets of Richard King Mellon Foundation as of December 31, 1994 and 1993 and the related statements of income, expenses and changes in fund balances for the years ended December 31, 1994 and 1993. We have also audited the supporting summary of investments as of December 31, 1994. These financial statements and summary of investments are the responsibility of the Foundation's management. Our responsibility is to express an opinion on the financial statements and summary of investments based on our audits.

We conducted our audits in accordance with generally accepted auditing standards. Those standards require that we plan and perform the audit to obtain reasonable assurance about whether the financial statements and summary of investments are free of material misstatement. An audit includes examining, on a test basis, evidence supporting the amounts and disclosures in the financial statements. An audit also includes assessing the accounting principles used and significant estimates made by management, as well as evaluating the overall financial statement presentation. We believe that our audits provide a reasonable basis for our opinion.

In our opinion, the financial statements referred to above present fairly, in all material respects, the financial position of Richard King Mellon Foundation at December 31, 1994 and 1993 and the results of its operations and changes in its fund balances for the years ended December 31, 1994 and 1993 in conformity with generally accepted accounting principles. In addition, in our opinion the summary of investments referred to above, when considered in relation to the basic financial statements taken as a whole, present fairly, in all material respects, the information included therein.

COOPERS & LYBRAND LLP

Pittsburgh, Pennsylvania
May 17, 1995

RICHARD KING MELLON FOUNDATION

Pittsburgh, Pennsylvania

GUIDELINES: Basic information about the priorities of the Foundation are contained in the information below. The reverse side is an application form which should accompany any proposal sent to the Foundation.

POLICY

The Foundation has two distinct areas of interest:

- 1) Pittsburgh and Southwestern Pennsylvania
Programs that relate to:
 - Education
 - Human Services
 - Medicine and Health Care
 - Civic Affairs & Cultural Activities

- 2) National Programs
 - American Land Conservation Program
 - Conservation of Natural Areas

Proposals must be accompanied by a copy of the applicant's classification ruling under current Internal Revenue Service regulations.

The Foundation will not consider requests on behalf of individuals, and normally does not consider requests for grants to conduit organizations which pass on funds to other organizations. Also, the Foundation does not make grants outside the United States.

The Board of Trustees meets periodically to review proposals.

All proposals must be accompanied by a completed application form (see reverse), and be addressed to:

Mr. Michael Watson
Vice President and Program Director
Richard King Mellon Foundation
One Mellon Bank Center
500 Grant Street, Suite 4106
Pittsburgh, PA 15219-2502

Richard King Mellon Foundation
GRANT APPLICATION

Please complete the following:

Name of Organization:

Address:

Administrative Officer:

Amount Requested:

Mission Statement of Organization:

.....

.....

.....

.....

Brief Description of Project:

(Please limit to space provided below)

.....

.....

.....

.....

.....

.....

.....

Checklist of Required Attachments:

A copy of the latest Internal Revenue Service determination letter indicating tax-exempt status under Section 501(c)(3) and 509(a).

An Executive Summary providing an overview of the organization, the proposed project, the problem it seeks to address, the population it will serve, and how it will be operated.

List of Board of Directors and names of Chairman and/or President.

Background of organization, including history, purpose, and types of programs it provides.

Audited financial statements for the last two years.

Operating budget and timetable for proposed project.

Annual Reports, brochures, catalogs, etc.

Other sources of funding and an explanation of how project will be financed at the expiration of the proposed grant.

The method to be used in evaluating the success of the project.

RICHARD KING MELLON FOUNDATION 1994 ANNUAL REPORT

